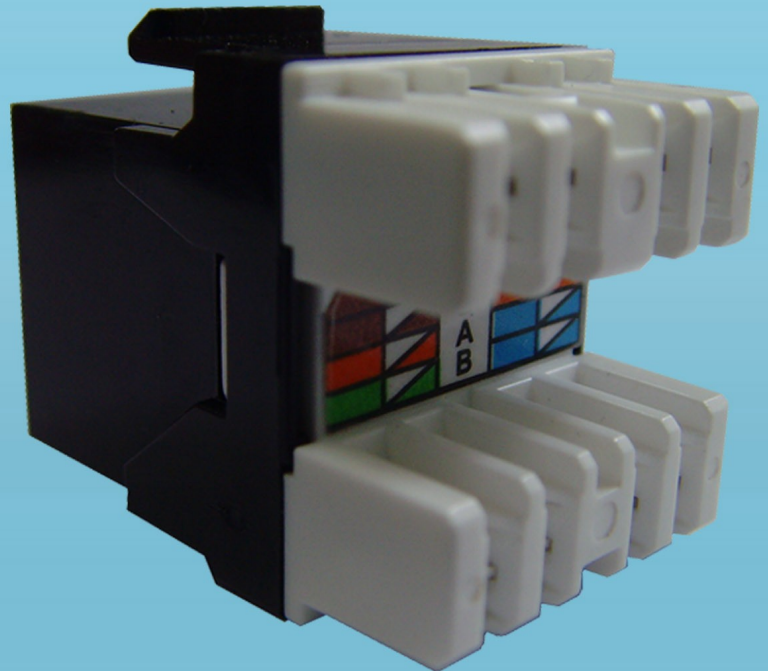


Category 6 Cabling Solution

C6 Premium



C6 Premium

Stable and Reliable Data Communication Solutions from Infinique

Infinique provides high quality end-to-end solutions for communication infrastructure that bring great value to its customers. We have achieved this through our core principle of delivering maximum performance through design excellence. Our business has been built on continued product innovation and quality added with great customer service to answer today's dynamic and demanding applications.

C6 Premium Copper Systems from Infinique is premium performing Class E / Category 6 Data Communication Solutions. C6 Premium offers our customers a highly stable, reliable and efficient platform for their LAN applications.

C6 Premium Copper Systems is an ideal choice for businesses seeking superior performance and security from a communications infrastructure.

Infinique offers complete, end to end, shielded and unshielded, C6 Premium Copper Systems. The broad range of cables, patch panels, keystone jacks, patch cords, work area outlets and enclosures provides ease and flexibility to support data communication networks of all sizes. It's installer friendly keystone jacks and patch panels results in quicker terminations.

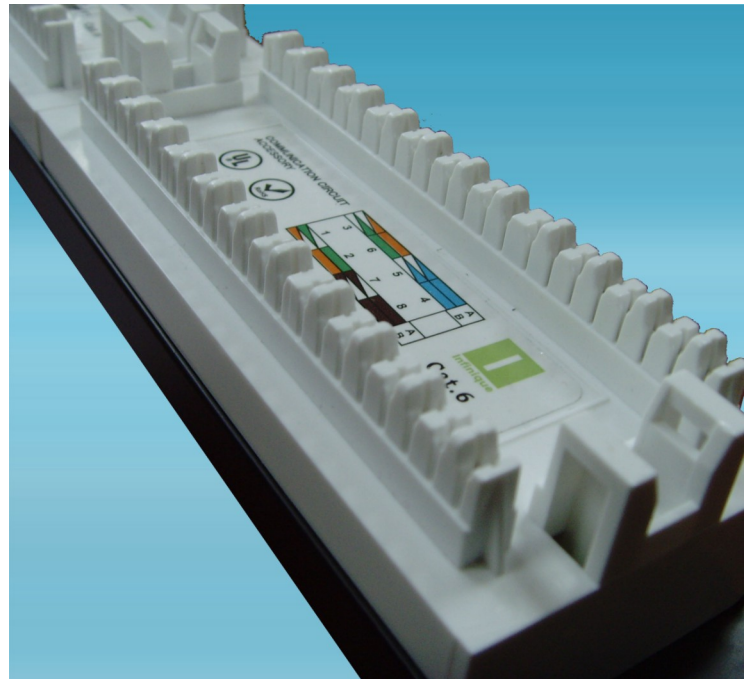
C6 Premium is for businesses seeking superior performance and security from a communications infrastructure. It is an ideal choice for installations, including:

- Server Farms
- Data Centers
- Offices
- Industrial
- Residential

The C6 Premium Copper Systems has been designed for ease of installation and operation.

Performance and Standards compliance
The C6 Premium delivers a very high electrical performance and complies with the Class E /Category 6 published standards.

The C6 Premium Copper Systems support all protocols defined in current editions of ISO 11801:2002, ANSI/TIA/EIA 568B.2.1 : 2002 and EN50173-1:2002 and are fully backward compatible to Class D.



Warranty

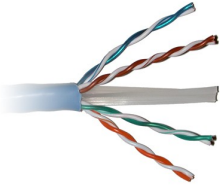
C6 Premium Copper Systems is covered under the Infinique Certified Systems 25 years Warranty.

Infinique warrants that all qualified products used in the Certified System are, in normal and proper use free from defects in material and workmanship and perform in accordance with applicable ISO/IEC11801 specifications in effect at the time of the sale.

C6 Premium Copper Systems are Stable, Reliable and high performing Category 6 Data Communication Solutions from Infinique.

C6 Premium

C6 Premium Product Line



Cables

Infinique's offers a range of C6 Premium shielded and unshielded Category 6 cables with considerable margin above all electrical transmission performance required by Gigabit Ethernet Standards.

Cables comply to:

- EN 50288-4-1 up to 500MHz
- IEC 61156-5 up to 500MHz
- Flame Retardant as per IEC 60332-1 and EN 50266-2-1
- Non Corrosive as per IEC 60754-2 and EN 50267
- Low Smoke Emission as per IEC 61034 and EN 50268



Keystone Jacks

C6 Premium Category 6, 110 IDC Keystone Jacks have a slim profile to ensure a clean professional installation. Electrical performance of these jacks are guaranteed to meet or exceed the category 6 channel specification. 110 IDC terminations allow for quick and easy termination of 22 to 24 AWG cable.

Cables comply to:

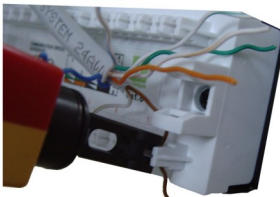
- Robust IDC design ensures maximum performance from terminations
- 180 Degree 110 IDC Color Coded Terminations
- High Impact Flame Retardant Plastic Compound
- Accepts 22-26 AWG conductors



Patch Cords

C6 Premium Category 6 Patch Cords are designed to guarantee application assurance, provide optimum channel performance and support for emerging Gigabit Ethernet Applications. Molded Slim-Line Boots enable the patch cords to be installed in high density equipment, and prevents snags when pulling cable.

- Modular plug contacts 50µ" Gold Plated
- Molded Slim-Line Snag-Less Integrated Boot
- Flame retardant PVC Cable Jacket



Patch Panels

C6 Premium Patch Panels from Infinique provides higher bandwidth to transmit data in excess of 250MHz, and are well suited for data centers and storage area networks (SANs). These panels utilize a rugged construction and superior designed IDC with reinforced ends for installer friendly termination. They are color coded to support T568A and T568B Universal Wiring Schemes.

- Built-in Cable Management with strain relief system
- Rugged construction with superior designed IDC with reinforced ends
- Full port numbering with additional writable space for port identification



Face Plates and Brackets

Infinique supplies a wide range of face plates and modular brackets to provide a work area outlet solution for wall and floor box applications. Our face plates comprises of both UK and US styles. Infinique's face plates are available as angled, flat, shuttered, un-shuttered and modular as well. Wall Boxes are also available for the face plates.

A full range of Work Area Outlets for Copper Systems is available in Infinique Structured Cabling Solution.

C6 Premium

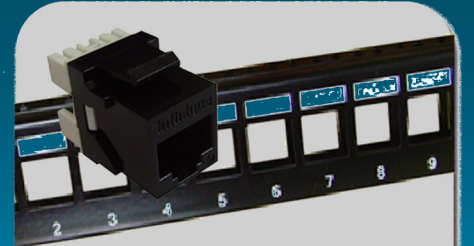
Channel Performance

Frequency (MHz)		1	4	10	16	20	31.25	62.5	100	125	155	175	200	250	350	500	550
Attenuation (dB)	Typical	1.9	3.5	5.5	7.0	7.8	9.8	14.2	18.4	20.8	23.4	25.0	27.0	30.6	37.2	45.9	48.6
	Spec	2.1	4.0	6.3	8.0	9.0	11.4	16.5	21.3	24.1	27.2	29.2	31.5	35.9	-	-	-
NEXT (dB)	Typical	80.7	71.0	64.6	61.2	59.6	56.4	51.4	47.9	46.3	44.7	43.8	42.8	41.1	35.6	32.9	-
	Spec	65.0	63.0	56.6	53.2	51.6	48.4	43.4	39.9	38.3	36.7	35.8	34.8	33.1	-	-	-
PSNEXT (dB)	Typical	78.6	68.8	62.3	58.9	57.2	54.0	48.8	45.3	43.6	42.0	41.1	40.1	38.3	32.8	30.0	-
	Spec	62.0	60.5	54.0	50.6	49.0	45.7	40.6	37.1	35.4	33.8	32.9	31.9	30.2	-	-	-
Return Loss (dB)	Typical	28.0	25.0	23.0	22.0	21.5	20.5	19.0	18.0	17.5	17.0	16.8	16.5	16.0	15.3	14.5	-
	Spec	19.0	19.0	19.0	18.0	17.5	16.5	14.0	12.0	11.0	10.1	9.6	9.0	8.0	-	-	-
ELFEXT (dB)	Typical	78.3	66.2	58.3	54.2	52.2	48.4	42.3	38.3	36.3	34.5	33.4	32.2	30.3	22.4	19.3	-
	Spec	63.3	51.2	43.3	39.2	37.2	33.4	27.3	23.3	21.3	19.5	18.4	17.2	15.3	-	-	-
PSELFEXT (dB)	Typical	75.3	63.2	55.3	51.2	49.2	45.4	39.3	35.3	33.3	31.5	30.4	29.2	27.3	19.4	16.3	-
	Spec	60.3	48.2	40.3	36.2	34.2	30.4	24.3	20.3	18.3	16.5	15.4	14.2	12.3	-	-	-
Propagation Delay (ns)	Typical	520	505	500	500	500	500	500	500	500	500	500	500	500	500	500	500
	Spec	580	562	555	553	552	550	549	548	547	547	547	547	546	-	-	-
Delay Skew (ns)	Typical	<30	<30	<30	<30	<30	<30	<30	<30	<30	<30	<30	<30	<30	<30	<30	<30
	Spec	<50	<50	<50	<50	<50	<50	<50	<50	<50	<50	<50	<50	<50	-	-	-
ACR (dB)	Typical	78.8	67.6	59.1	54.3	51.8	46.6	37.2	29.6	25.5	21.3	18.7	15.8	10.5	-1.6	13.1	-
	Spec	62.9	59.0	50.2	45.2	42.6	37.0	26.9	18.6	14.2	9.51	6.6	3.3	-2.8	-	-	-
PSACR (dB)	Typical	76.7	65.3	56.8	51.9	49.4	44.1	34.6	26.9	22.9	8.6	16.0	13.1	7.7	-4.5	15.9	-
	Spec	59.9	56.5	47.7	42.6	39.9	34.3	24.1	15.8	11.3	6.6	3.7	0.3	-5.8	-	-	-



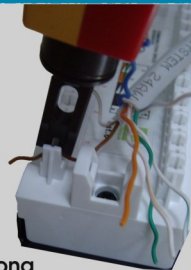
Speedy Installation

Pyramid Wire Entry System of the 110 IDC Connector of Category 6 180 Degree Keystone Jacks separates conductors when lacing cables for speedy installation.



Cost Effective

Category 6 180 Degree Keystone Jacks snaps into place in our Modular 24 Port Patch Panel offering flexibility and a cost effective solution.



Extra Strong

IDCs have been specially designed as a single block with reinforced ends to give extra strength during termination.

C6 Premium

C6 Premium Product Part Number

Cables		
	CMX Jacket	LSOH Jacket
Cat.6 UTP 4x2x 23 AWG Cable	INC6U4GYR	INC6U4GYR-L
Cat.6 UTP 4x2x 24 AWG Cable	INC6SU4GYR	INC6SU4GYR-L
Cat.6 F/FTP 4x2x 24 AWG Cable	INC6SU4GYF	INC6SU4GYF-L
Cat.6 S/FTP 4x2x 24 AWG Cable	INC6SU4GYS	INC6SU4GYS-L
Availability 305m Reel Standard. Custom package length are available.		

Patch Panels		
	24 Port	48 Port
Cat.6 UTP with back bar - Black	INPP624	INPP648
Cat.6 UTP with back bar - Gray	INPP624G	INPP648G
Cat.6 Shielded Panel - Black	INSPP624	INSPP648
Unloaded Snap-in Jack Panel - Black	INPPU24MB	-
Unloaded Snap-in Jack Panel - Gray	INPPU24MBG	-

Keystone Jacks	
Cat.6 UTP 110 IDC, 180 Degree - Black	INKJ6D180BK
Cat.6 UTP 110 IDC, 180 Degree - White	INKJ6D180WH
Cat.6 UTP 110 IDC, 90 Degree - Black	INKJ6D90BK
Cat.6 UTP 110 IDC, 90 Degree - White	INKJ6D90WH
Cat.6 Shielded 110 IDC, 180 Degree	INKJS6D180BK

Patch Cords	
	Gray
Cat.6 4-Pair 24AWG UTP, Half Boot, 1M	INPC6HB1GY
Cat.6 4-Pair 24AWG UTP, Half Boot, 2M	INPC6HB2GY
Cat.6 4-Pair 24AWG UTP, Half Boot, 3M	INPC6HB3GY
Cat.6 4-Pair 24AWG Shielded, 1M	INPC61GYS
Cat.6 4-Pair 24AWG Shielded, 2M	INPC62GYS
Cat.6 4-Pair 24AWG Shielded, 3M	INPC63GYS



Canada

Infinique Worldwide Inc
151 Brunel Road
Mississauga, Ontario
Canada L4Z 2H6
Toll Free : +1-866-516-1023
Tel: +1-416-876-3743

Middle East

Infinique EMEA FZC
PO Box 122117
R4-24, Sharjah Airport Free Zone
Sharjah, United Arab Emirates
Tel: +971-6-5579447

Infinique products are available through distributors in the following countries:

Middle East

Saudi Arabia
Oman
Egypt
Libya
Qatar
Kuwait

Africa

South Africa
Kenya
Tanzania
Angola

Sub Continent

India
Pakistan
Bangladesh
Srilanka

Email us at info@infinique.com with your inquiries. We are actively looking into expanding into other markets, please contact us if you are interested in promoting our products.

www.infinique.com
nw.support@infinique.com

© Infinique Worldwide Inc 2011. All rights reserved.

This document is protected by copyright and distributed under licenses restricting its use, copying, distribution and recompilation. No part of this product or document may be reproduced in any form by any means without prior written authorization of Infinique Worldwide Inc and its licensors. Information contained in this document is valid and correct at the time of its publication. Product specification, design and availability subject to change without prior notice.



Document Reference: FOFPP/CA/v1/10/11